

More Power to You

**KIDS'
CORNER**

FUN FACTS & ACTIVITIES
about energy in ontario

Learn more at oeb.ca

Who is the OEB?

The Ontario Energy Board (OEB) regulates Ontario's energy sector. We make decisions and rules to make sure consumers are treated fairly and the energy sector is reliable and sustainable.

We oversee how energy companies operate.



Electricity Trivia

Test your electricity knowledge and see how many questions you can answer!

Find the answers on the back of the booklet!

1. If you are the last person to leave a room, be sure to:

- A) Check for dirty dishes
- B) Make sure no one's hiding
- C) Turn off the lights
- D) Leave the lights on for the next person

2. A device that controls the temperature in your home is called a:

- A) Microwave
- B) Conductor
- C) Thermometer
- D) Thermostat

3. A fan uses as much electricity as an air conditioner.

- A) True
- B) False

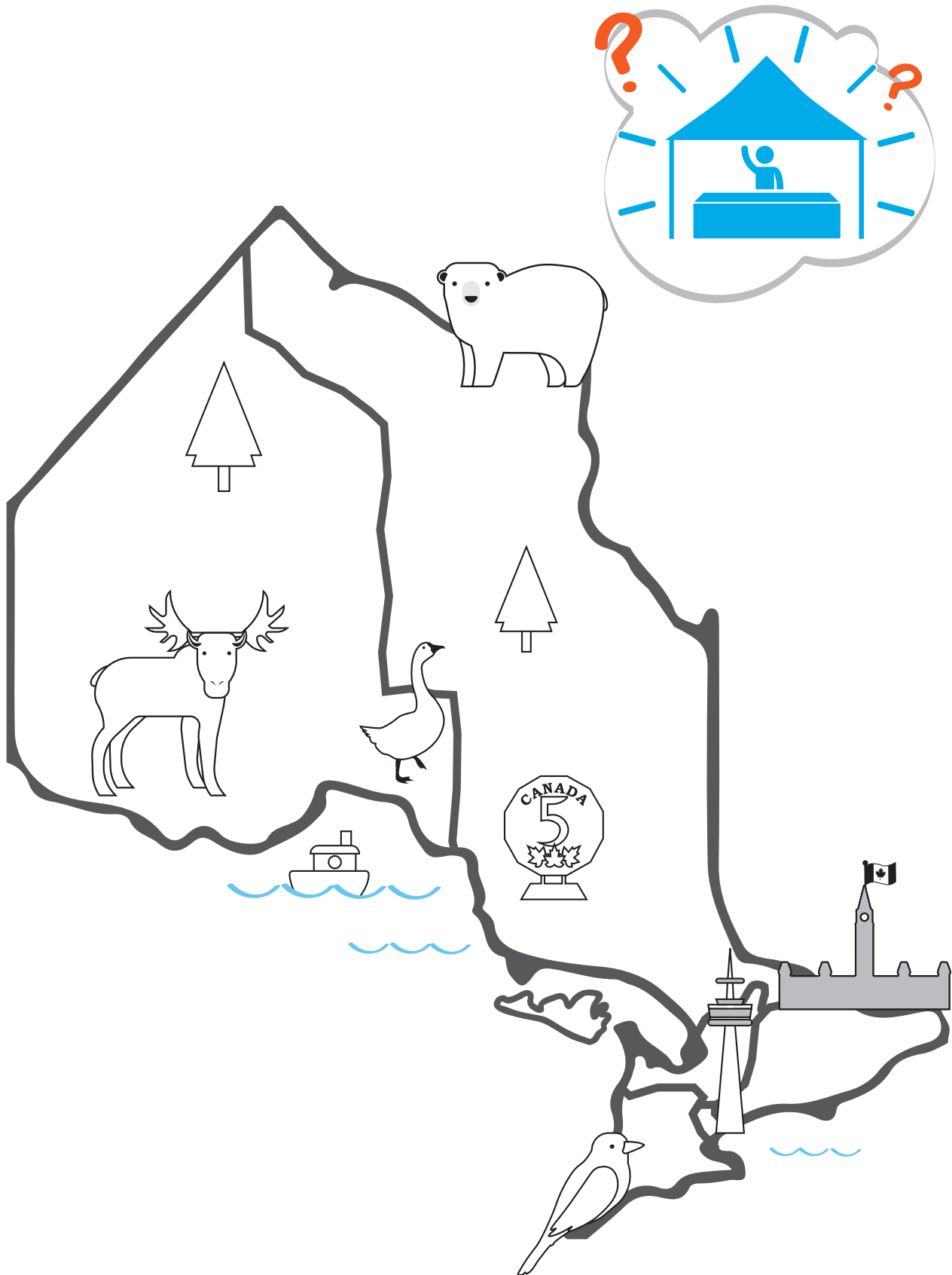
4. The best time of day to use appliances like washers, dryers, and dishwashers is in the middle of the day.

- A) True
- B) False

5. Keeping a door or window open while the air conditioning is on isn't a big deal.

- A) True
- B) False

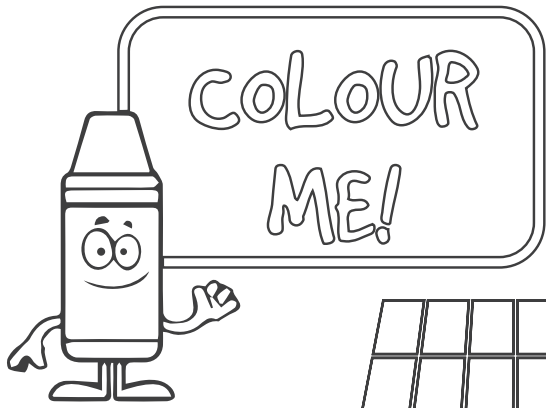
Where did you meet us?



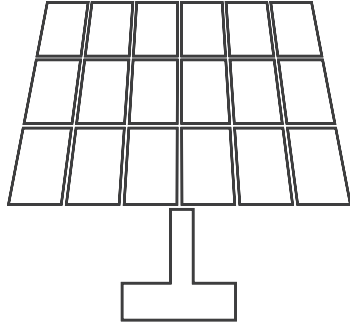
Spot the Difference

Can you find all 8 differences between these two images?

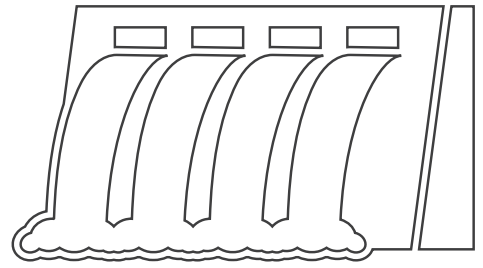




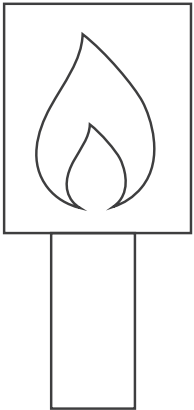
COLOUR
ME!



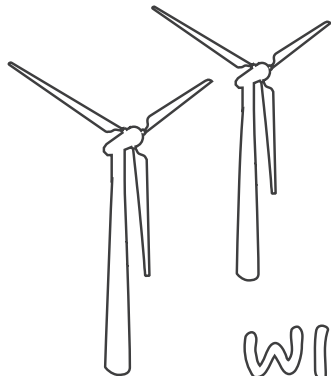
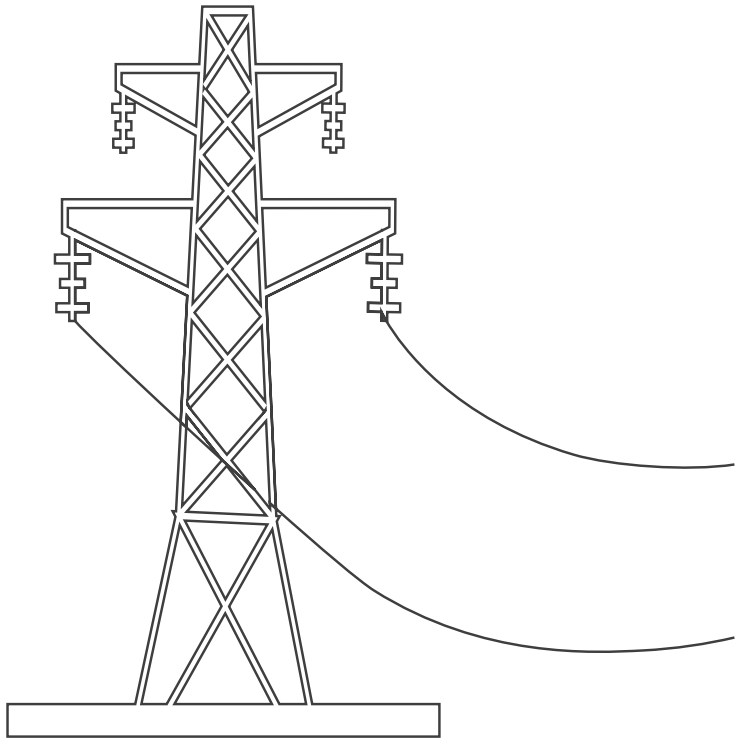
SOLAR



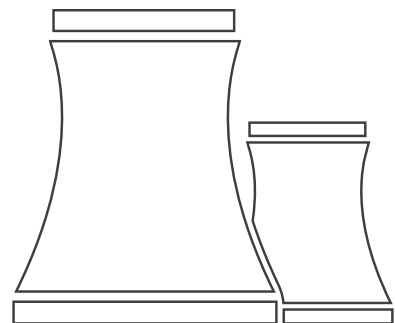
HYDRO
ELECTRIC



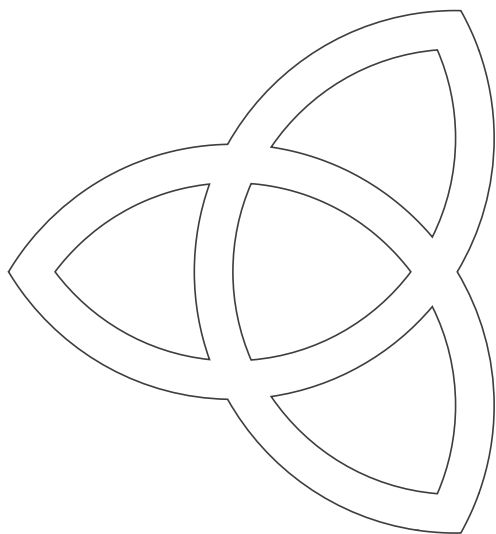
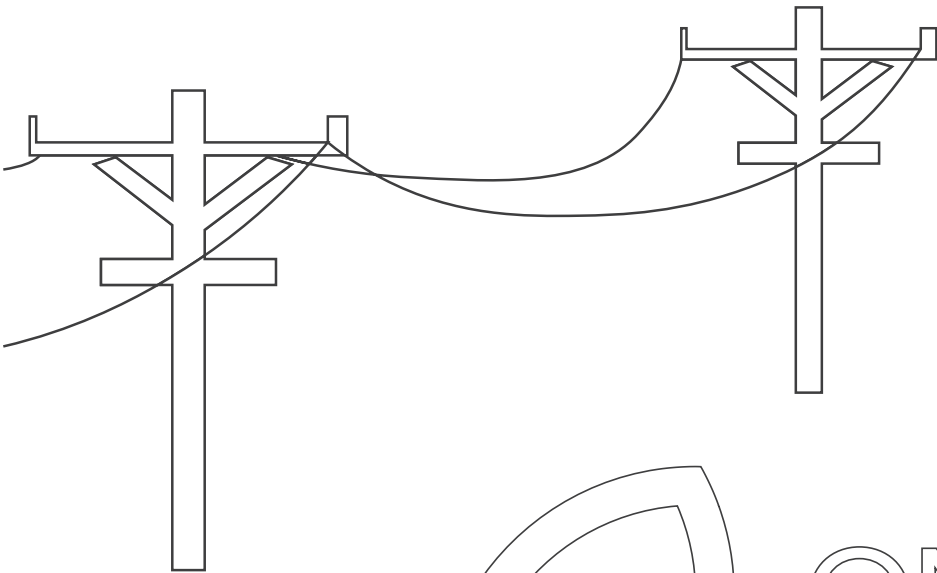
NATURAL
GAS



WIND



NUCLEAR



ONTARIO
ENERGY
BOARD

Colour By Numbers

Use the number to colour in the time-of-use charts.
When is it cheaper to use electricity?

¢ Off-peak

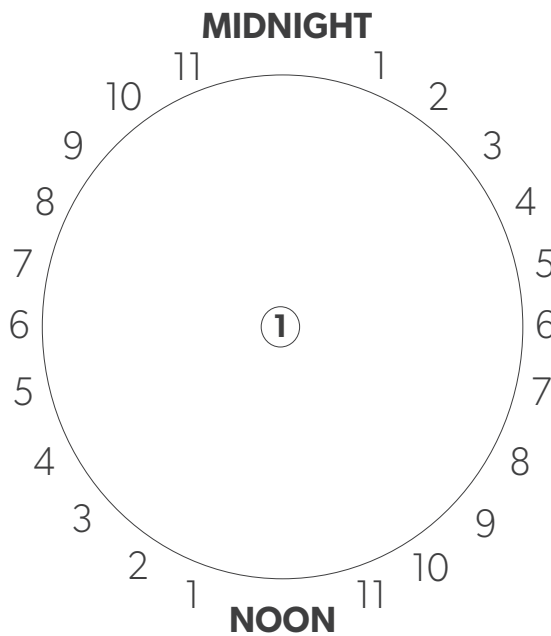
¢¢ Mid-peak

¢¢¢ On-peak

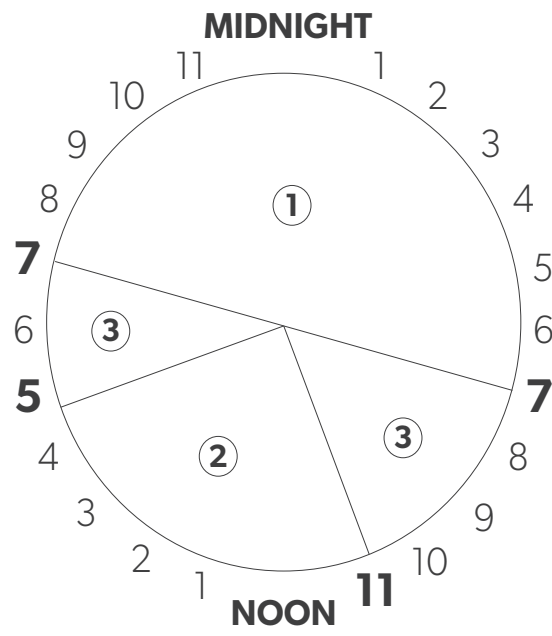
① Colour in **green**

② Colour in **yellow**

③ Colour in **red**



**Weekends and
Statutory Holidays**



Winter
(November 1 - April 30)
Weekdays

Electricity rates change throughout the day based on how much electricity is being used. This is called demand. Rates are cheapest when demand for electricity is lowest: during the evenings, on weekends and holidays.

Off-Peak – When demand for electricity is lowest. This is not the busiest time of the day.

Mid-Peak – When demand is moderate. This is busier than off-peak but not as busy as on-peak.

On-Peak – When demand is highest. These are the busiest times of day.

* Time-of-use (TOU) periods change for winter months. For current time-of-use (TOU) pricing, please visit oeb.ca/tou

Spot the Hidden Words

Find and circle the 10 energy-related words hidden up, down or across the grid.

E	L	I	G	H	T	A	B
P	N	F	J	P	I	K	I
O	U	E	S	L	M	Q	L
W	H	A	R	U	E	W	L
E	Y	V	N	G	A	S	D
R	D	F	U	Z	Y	C	E
A	R	I	G	H	T	S	K
C	O	N	S	U	M	E	R

Bill Plug Time Hydro Energy

Gas Light Power Rights Consumer

Word Scramble

Each bubble holds a word that has something to do with energy. Unscramble the word by re-writing the letters in the correct order in the spaces below each bubble.













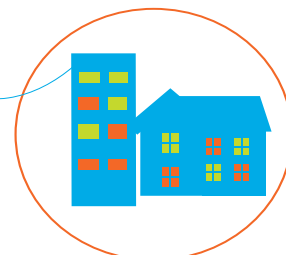
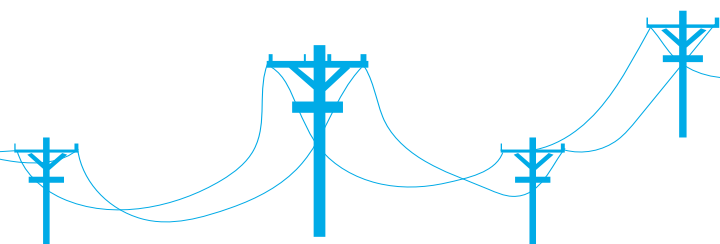
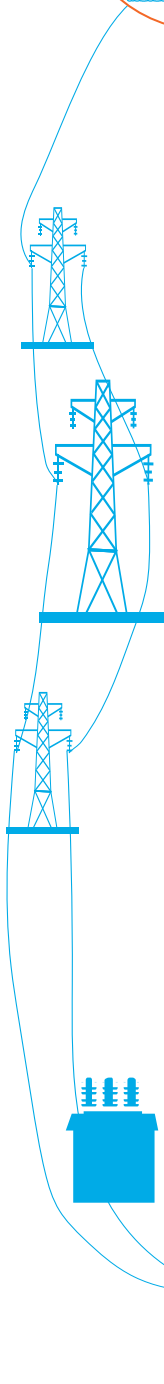
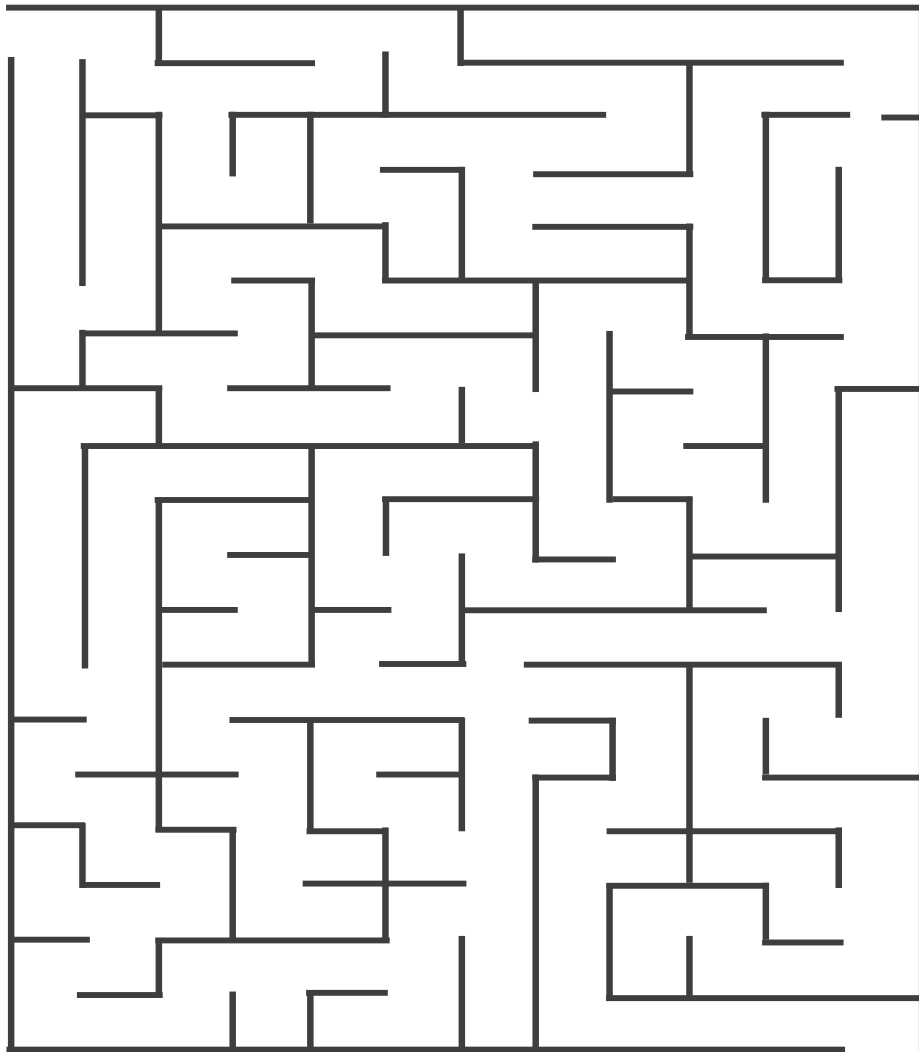


Solve the Maze!

Help get electricity to your home. Trace a path from the start of the maze to the finish.



START



FINISH

SOLUTIONS

Did you get it right?

Check your answers with these solutions below.

Electricity Trivia

- 1) Turn off the lights
- 2) Thermostat
- 3) False
- 4) False
- 5) False

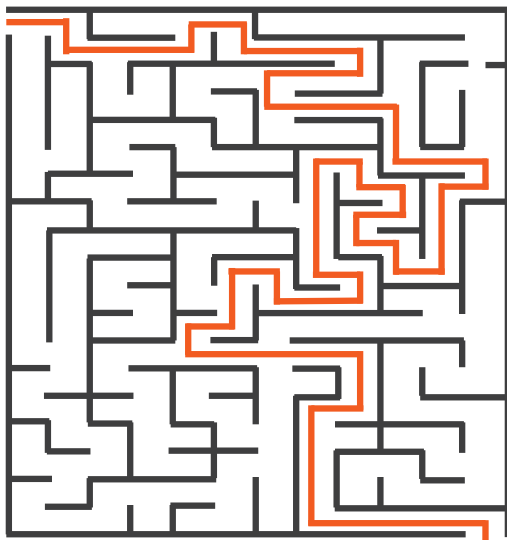
Word Scramble

- 1) Gas
- 2) Bill
- 3) Save
- 4) Hydro
- 5) Plug
- 6) Energy
- 7) Light

Spot the Difference



Solve the Maze!



Spot the Hidden Words

E	L	I	G	H	T	A	B
P	N	F	J	P	I	K	I
O	U	E	S	L	M	Q	L
W	H	A	R	U	E	W	L
E	Y	V	N	G	A	S	D
R	D	F	U	Z	Y	C	E
A	R	I	G	H	T	S	K
C	O	N	S	U	M	E	R